

Made from 100% recycled plastic waste.

Cost-effective pallet solutions- Reducing lifetime costs and logistics risks.



Reducing waste >

Our zero waste pallets are made from 100% waste plastic using Re>Pal's unique ThermoFusion™ technology process. Our pallets offer your business the performance and convenience of plastic while enabling your sustainability goals through leveraging the low energy, environmentally friendly and life-time cost-effective Re>Pal solution.

Re>Pal supplies its superior pallets across multiple industry types including large multi-national and domestic companies across, drinks & bottling, FMCG, manufacturing, electronics, chemicals and logistics - businesses interested in lowering their waste, energy and carbon footprint without compromising on quality or profitability.

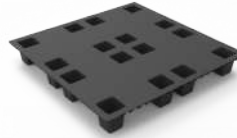
Re>Pal[™]
Uniquely Sustainable

Pallet range for your logistics needs >



NP 1090 - Nestable Pallet

Size 1090 x 1090 x 150 mm
Weight 15 kg
Lifting 1200 kg
Stacking 3000 kg



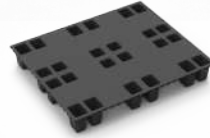
NP 1111 New - Nestable Pallet

Size 1100 x 1100 x 150 mm
Weight 12 kg
Lifting 1200 kg
Stacking 3000 kg



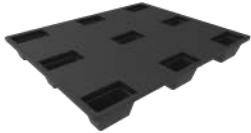
NP 1210 - Nestable Pallet

Size 1200 x 1000 x 150 mm
Weight 14 kg
Lifting 1200 kg
Stacking 3000 kg



NP 1210 New - Nestable Pallet

Size 1200 x 1000 x 150 mm
Weight 12 kg
Lifting 1200 kg
Stacking 3000 kg



NP 1210 L - Nestable Pallet Lite

Size 1200 x 1000 x 150 mm
Weight 13 kg
Lifting 1000 kg
Stacking 3000 kg



RP 1210 - Rackable Pallet

Size 1200 x 1000 x 170 mm
Weight 32.5 kg
Lifting 1200 kg
Stacking 3000 kg
Racking 1200 kg



NSP 1090 - Nestable and Stackable Pallet

Size 1090 x 1090 x 150 mm
Weight 20 kg
Lifting 1200 kg
Stacking 3000 kg
Racking 700 kg



NSP 1210 - Nestable and Stackable Pallet (4 Ways)

Size 1200 x 1000 x 150 mm
Weight 18 kg
Lifting 1200 kg
Stacking 3000 kg
Racking 500 kg



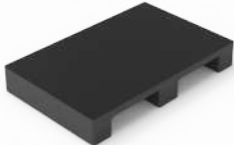
HD 1210 - Heavy Duty Pallet

Size 1200 x 1000 x 170 mm
Weight 41.5 kg
Lifting 2500 kg
Stacking 3000 kg
Racking 1000 kg



HD 1210 L - Heavy Duty Pallet Lite

Size 1200 x 1000 x 150 mm
Weight 35 kg
Lifting 1500 kg
Stacking 3000 kg
Racking 1000 kg



HD 1107 (C48) - Heavy Duty Pallet for Carton Box

Size 1130 x 730 x 150 mm
Weight 15 kg
Lifting 1000 kg
Stacking 3000 kg



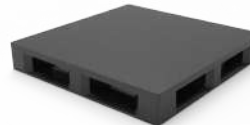
HDX 1311 - Heavy Duty Pallet (available in runner version)

Size 1300 x 1100 x 170 mm
Weight 36 kg
Lifting 1500 kg
Stacking 3000 kg
Racking 1000 kg



HDX 1211 - Heavy Duty Pallet (available in runner version)

Size 1200 x 1100 x 170 mm
Weight 34 kg
Lifting 1500 kg
Stacking 3000 kg
Racking 1000 kg



HDX 1111 - Heavy Duty Pallet (available in runner version)

Size 1100 x 1100 x 170 mm
Weight 32.5 kg
Lifting 1500 kg
Stacking 3000 kg
Racking 1000 kg



HDX 1210 - Heavy Duty Pallet (available in runner version)

Size 1200 x 1000 x 170 mm
Weight 32.5 kg
Lifting 1500 kg
Stacking 3000 kg
Racking 1000 kg



HDX 1165 - Heavy Duty Pallet

Size 1165 x 1165 x 153 mm
Weight 29 kg
Lifting 2500 kg
Stacking 5000 kg
Racking 2500 kg

Issue	Wood	Virgin Plastic	Recycled Plastic
Infestation risk	✗	★★★	★★★
Product safety - Integrity/losses	✗	★★★	★★★
Lost time injury (LTI's)	✗	★★★	★★★
Maintenance	✗	★★★	★★★
Lifetime value	✗	★★	★★★
Carbon intensity	✗	✗	★★★
Carbon price	✗	✗	★★★
Zero Waste	✗	✗	★★★
Risks to company's business model	✗	★★★	★★★
Positive sustainability message for your business	✗	✗	★★★

Contact us

sales@re-pal.com

East Java Factory

PT. RePal Internasional Indonesia
PIER (Pasuruan Industrial Estate Rembang)
Jl. Rembang Industri II No. 7 Mojoparan
Rembang, Pasuruan, Indonesia
67152
Phone +62 343 740 100