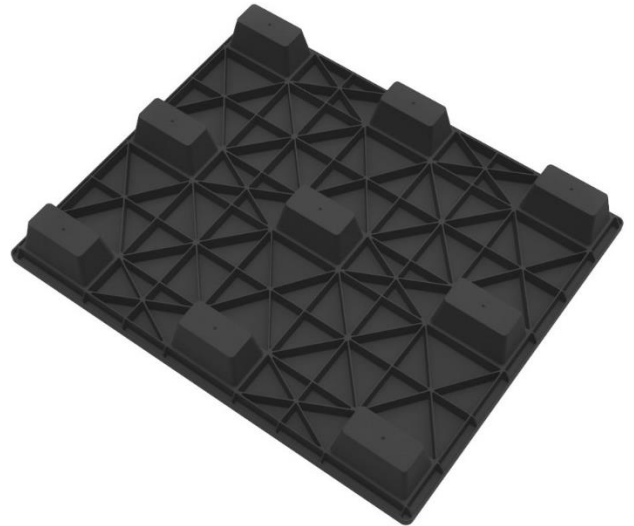
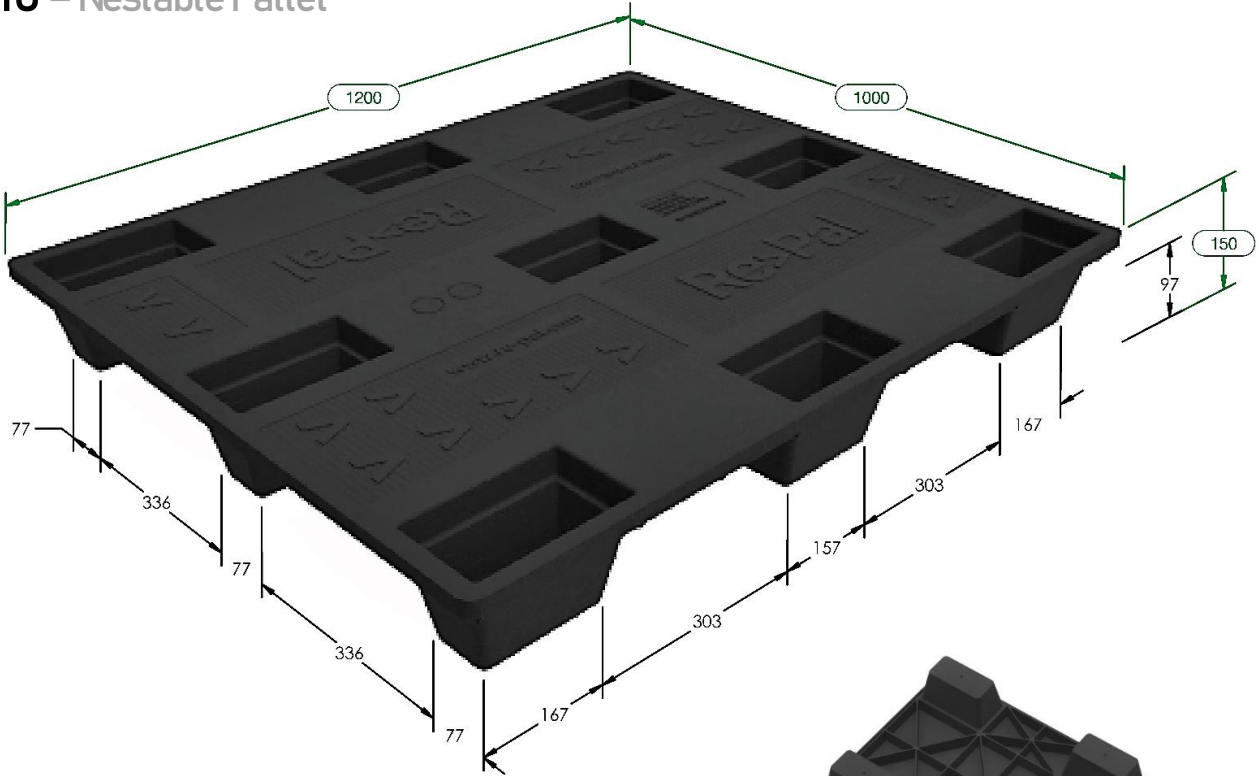





NP 1210 – Nestable Pallet



SPECIFICATION PALLET

1200x1000x150 mm		14.8 kg/pcs
✓	Lifting	1200 kg
✓	Stacking	3000 kg
✗	Racking	-
	Forklift Access	4 Ways
	Pallet Mover Access	4 Ways
	20 ft Container	477 pcs
	40 ft HC Container	1122 pcs

PALLET STORAGE

