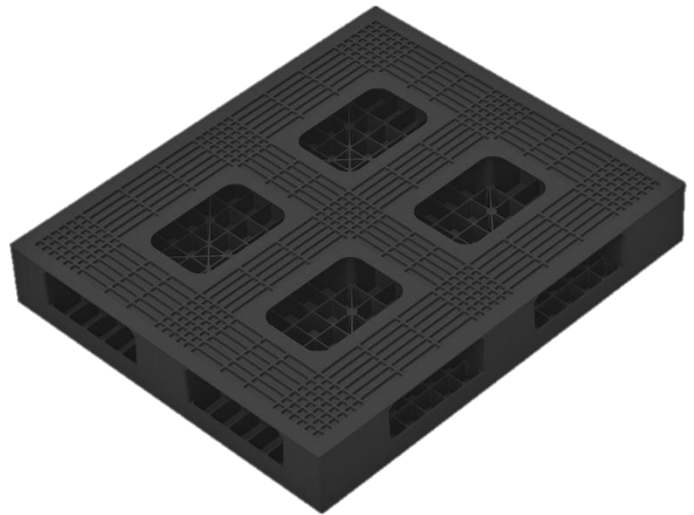
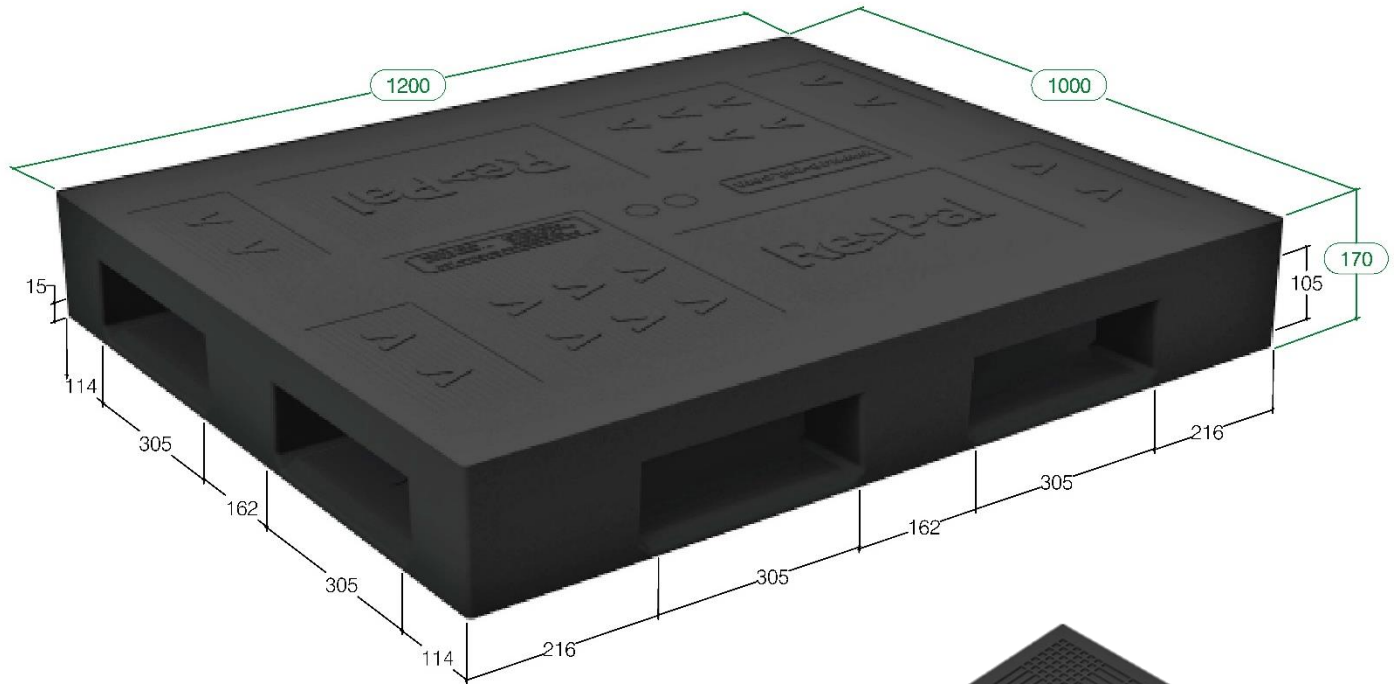







**HD 1210 – Heavy Duty Pallet**



**SPECIFICATION PALLET**

|  |                     |             |
|--|---------------------|-------------|
| 1200x1000x170 mm   |                     | 41.2 kg/pcs |
| ✓  | Lifting             | 2500 kg     |
| ✓  | Stacking            | 3000 kg     |
| ✓  | Racking             | 1000 kg     |
|  | Forklift Access     | 4 Ways      |
|  | Pallet Mover Access | 4 Ways      |
|  | 20 ft Container     | 134 pcs     |
|  | 40 ft HC Container  | 304 pcs     |

**PALLET STORAGE**

